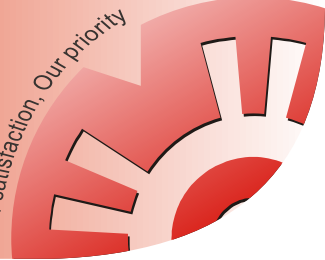


# ECA3020 Series

## ATX Mid Tower Case

Your satisfaction, Our priority

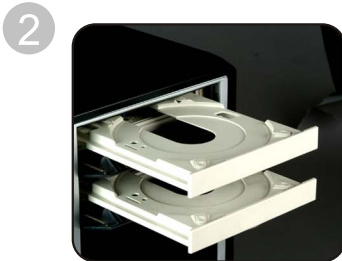


# Pandora<sup>slim</sup>

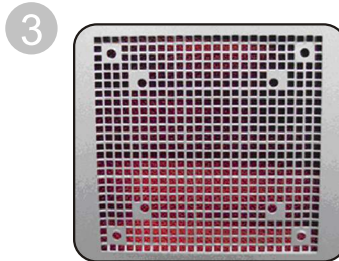
ECA3020-BS



1 Extra strengthened M/B holes to protect M/B from friction



2 Stylish meshed front panel with two CD-ROM flip covers



3 Enlarged PCI holes with 12/8cm fan (optional) for extreme add-on card cooling



4 Unique PSU cable holder design



5 Classic front panel with hidden front interface: 2 x USB 2.0, Audio I/O & Power/Reset



6 Intel CAG v1.1 Air Duct for extreme CPU cooling



7 EMI springs to minimize EMI radiation

### Features

- Classic front panel with hidden front interface: 2xUSB2.0, Audio I/O & Power/Reset
- Stylish meshed front panel with two CD-ROM flip covers
- Intel CAG v1.1 Air Duct for extreme CPU cooling
- Enlarged PCI hole with 12/8cm fan (optional) for extreme add-on card cooling
- EMI springs to minimize EMI radiation
- Extra strengthened M/B holes to protect M/B from friction
- Unique PSU cable holder design

### Specification

Type	ATX Mid Tower Case	
Intel CAG v1.1	Full compliance	
Case Dimensions	D480 x W180 x H410mm	
Material	SECC	
Drive Bays	5.25"	4 (exposed)
	3.25"	5 = 1 (exposed) + 4 (hidden)
M/B	ATX, Micro ATX	
Front I/O interface	2 x USB 2.0, Audio I/O	
Cooling fans	Front	1*8 cm (Optional)
	Side	1*12/8 cm (Optional)
	Rear	1*8 cm (Optional)
Expansion slots	7	

